

# Plasma/LCD Display Panel Stand



## Setup Guide, Version 1.4

This document is the Setup Guide for the Big City Production Services Pty Ltd Plasma/LCD Display Panel Stand.

© Copyright Big City Production Services Pty Ltd 2007. All rights reserved.

Version 1.4, published July 2007.

# Thank you for choosing Big City

Thank you for purchasing the Big City Display Panel Stand, the simplest way to mount up to two LCD or plasma display panels in temporary locations. The Big City Display Panel Stand is a precision-engineered device capable of supporting up to two screens of 50 kilograms each when installed properly according to the instructions in this guide.

Properly installed, the Big City Display Panel Stand provides an effective and safe mount for a wide range of plasma and LCD displays.

## Important - read this first!

Special techniques are required to install plasma and LCD panels using the Big City Display Panel Stand. Consequently, the stand should only be installed by a qualified installation expert. *Do not try to install this stand yourself.*

**Please note: Big City Production Services Ltd does not assume any liability for any injury or damage that may occur as a result of improper installation.**

## Display panel constraints

The Display Panel Stand suits 37" to 50" panels with mounting points between 280mm and 680mm, measured centre-to-centre horizontally, and up to 475mm vertically. Alternate brackets to suit small screens can be supplied on request. Please check your display panel instructions for the correct fasteners required.

# Components

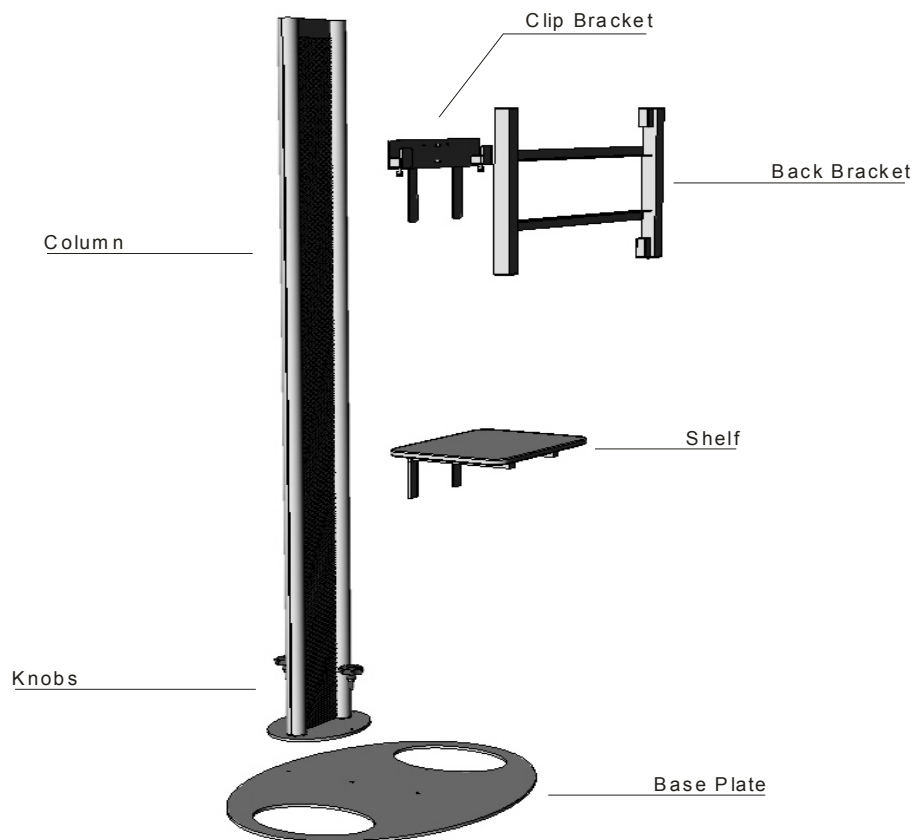
The Big City Plasma Stand is supplied with optional choices of screen mount and base. The two screen mount options are (1) a Clip Bracket and a Back Bracket with custom screw holes to suit the screen, and (2) Rail Bracket with Hook Struts to suit almost all larger screens. The two base options are (1) Fixed Base Plate or Mobile Base Plate.

Please check that your Display Panel Stand package contains the following components:

- 1 column
- 2 knobs.
- 1 shelf (includes 1 M8x40 bolts)

## Options in diagram below -

- 1 clip bracket (includes 4 M8x40 bolts)
  - 1 back bracket
- 
- 1 base plate

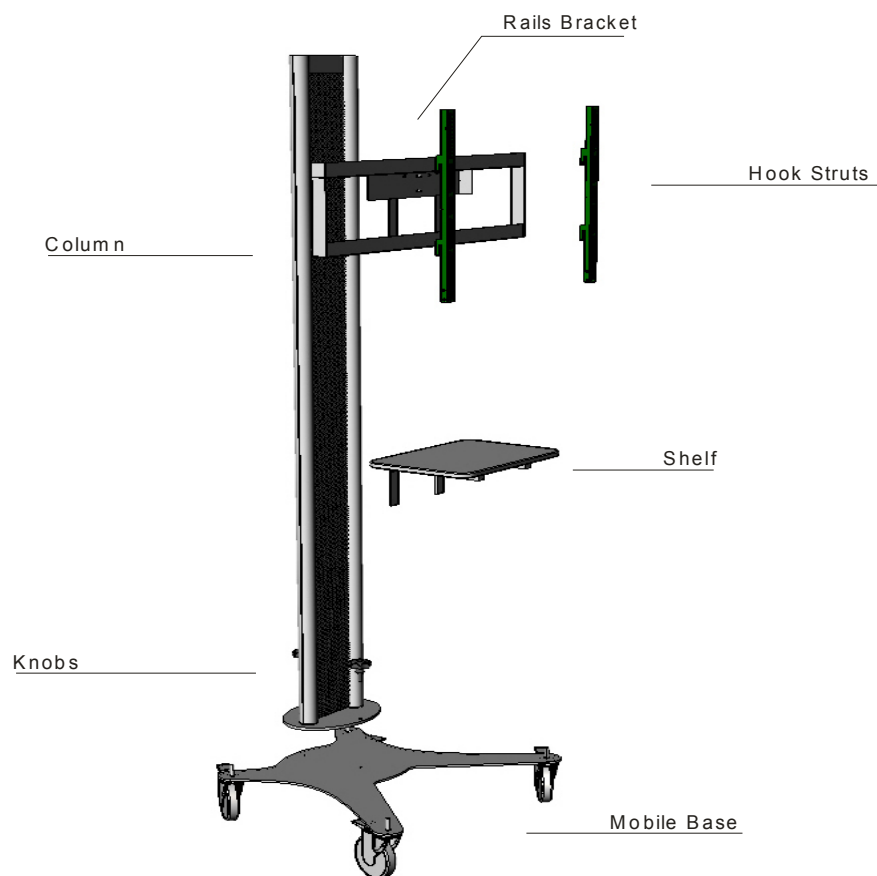


Please check that your Display Panel Stand package contains the following components:

- 1 column
- 2 knobs.
- 1 shelf (includes 1 M8x40 bolts)

**Options in diagram below -**

- 1 rail bracket (includes 2 M8x40 bolts)
- 2 hook struts
  
- 1 mobile base plate



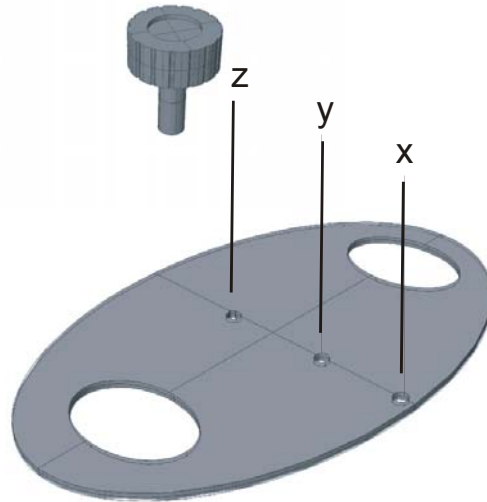
# Setup instructions

**Please note:** these instructions assume that you are a fully-qualified installation expert. If you are not, please stop now and ask a qualified installation expert to install the stand for you. Big City Production Services Pty Ltd does not assume any liability for any injury or damage that may occur as a result of improper installation.

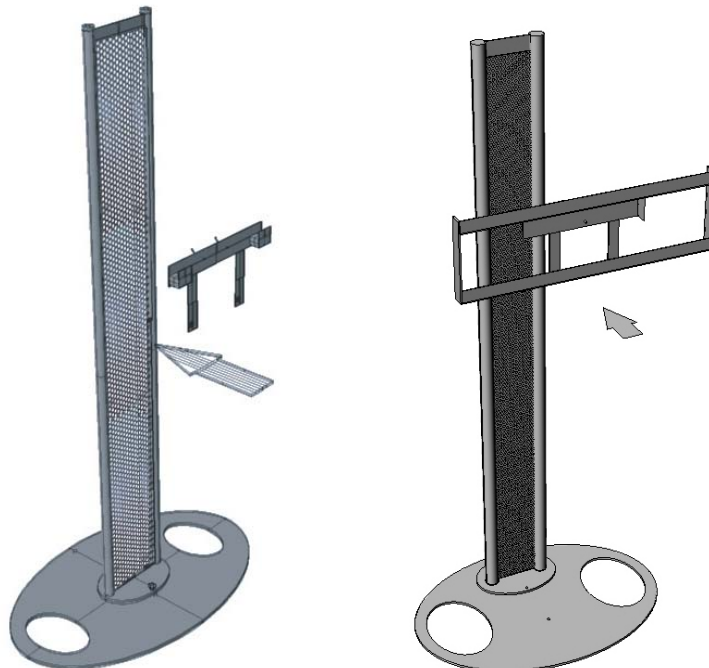
1. Carefully read the safety precautions about installation locations in your Plasma/LCD Panel Manual and then select a suitable location for installation.
2. Fasten the Column to the Base Plate using the two Knobs included:



3. If you are hooking one panel onto the stand, attach the column to the base plate in holes X and Y. If you want to hook two panels on the stand, attach the column in holes Y and Z (one in each side of the stand).

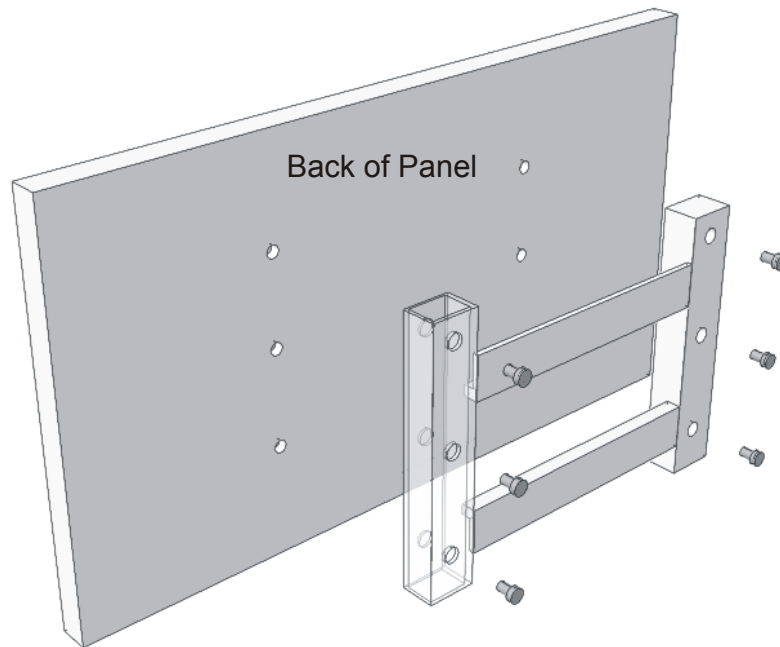


4. At the desired height, hook the Clip Bracket or Rail Bracket onto the Column. Ensure that the tangs of the Bracket are safely hooked into the perforated metal: Lock the Clip Bracket or the Rail Bracket from behind using the M8x40 bolts.

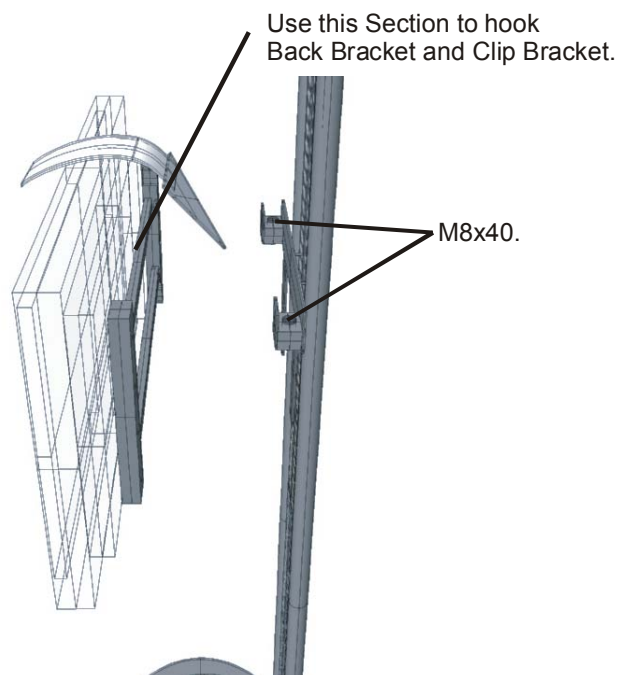


## Steps 5 & 6 for Back Bracket option

5. Attach the Back Bracket to the back of your display panel using the Bolts provided. Ensure that you have enough space between the back of the panel and the Back Bracket to hook the Back Bracket and Clip Bracket properly.



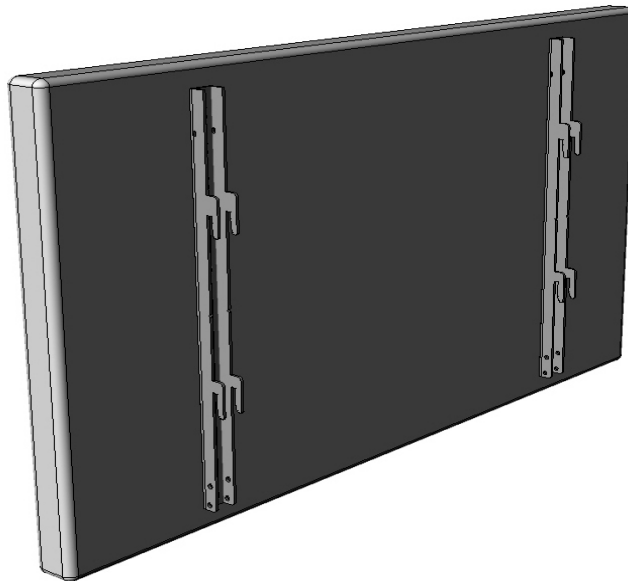
6. **Using at least two people**, align the Clip Bracket and the Hook Bracket together. To adjust the panel horizontally, use the M8x40 bolts included in the Clip Bracket.



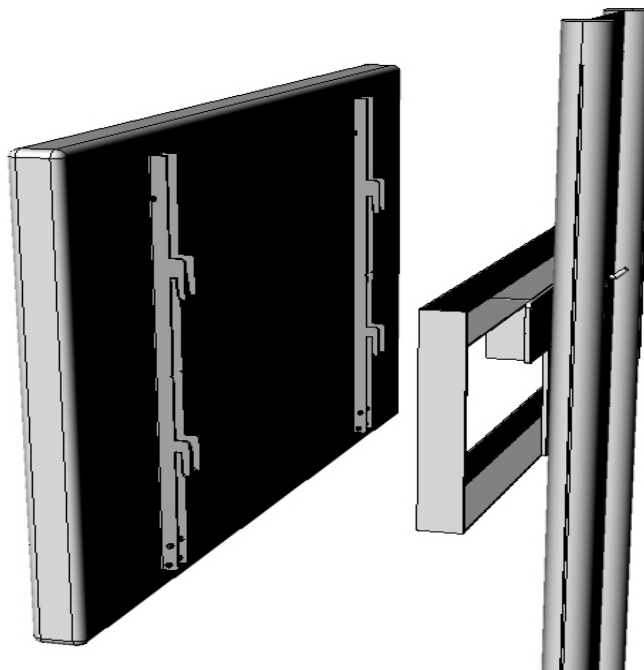


### Steps 7 & 8 for Rails & Hook Strup option

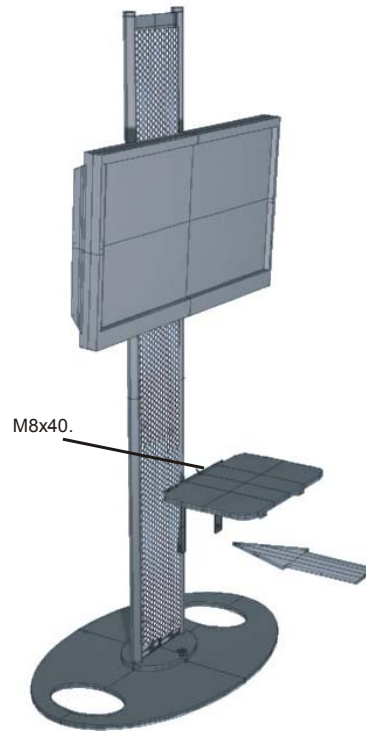
7. Attach the Hook Struts to the back of your display panel using the Bolts provided.



8. **Using at least two people**, align the Hook Struts and the Rail Bracket together. Use bolts at the top hook to adjust the panel horizontally and to lock it on the bracket.



9. Fasten the Shelf to the Column and lock from behind using the M8x40 bolt provided.



10. Attach all relevant cables as per the panel manufacturer's instructions.

## Some configuration samples



## Contacting Big City Production Services Pty Ltd

We are confident that a properly-installed Big City Display Panel Stand will give you many years of trouble-free service.

If you have any questions about installing or operating the stand, please contact us at:

Post: Unit E, 13-21 Mandible St., Alexandria, NSW 2015

Tel: (02) 9318 2354

Fax: (02) 9319 3929

Web: [www.bigcity.net.au](http://www.bigcity.net.au)

Email: [bigcity@bigcity.net.au](mailto:bigcity@bigcity.net.au)